

STEC

ROBOTIC TOTAL STATION AXIS10



With extraordinary performance of 0.5"/1" angle and 1+1ppm distance accuracy, fast and smooth motorization, and the powerful onboard program, AXIS10 makes the measurement tasks easier.

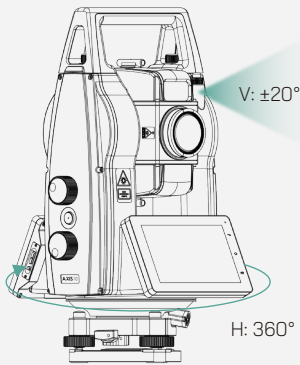
Easy develop for other industries, which brings you new possibilities.



Robotic total station AXIS10 is a smart choice for power, performance, and productivity which essentially optimize the time and cost with utmost accuracy.

Combines the engaging onboard software, the prism can be quickly aimed, locked and tracked with maybe the best-in-class **xTrak** technology.

Torque Drive



Torque Drive.

Let's Work in Silence.

Rotating at up to **180°/s**, AXIS10 ensures high-dynamic performance with its extraordinary xTrak technology, which is smoother and faster than others.

Prism Recognize. Automatically recognizes and measures the prism at distances up to **1000m**.

Prism Search. Scan and detect the prism within **300m** from the entire working site, saving almost 2/3 of the measurement steps compared to a manual total station.

Prism Lock. Follow and lock a moving prism at **20°/s**, which eliminate the need for standing around.

Flexible Connectivity

AXIS10 offers superior connectivity with USB, Wi-Fi, Bluetooth, long-range Bluetooth, serial port, and a SIM card slot, enabling effortless data exchange and remote control.

Touch-to-Aim Camera

Just simply tap on the screen to instantly direct AXIS10 to aiming the target. The 5-megapixel camera also helps to record the images or videos of target when necessary.

Work Further with S-Tablet

8-inch display with 500 nits brightness ensures clear visibility, even in bright light. **600m** remote control makes single-person operations efficient and effortless.

Key Features

- ▶ 0.5", 1" angle accuracy optional
- ▶ 1+1ppm distance accuracy
- ▶ Silent working with **xTrak**
 - Torque drive, 180°/s
 - Prism recognize: 1000m
 - Prism search 300m
 - Prism lock
- ▶ Guide light
- ▶ Touch-to-Aim camera
- ▶ 6.0-inch color and touch screen
- ▶ Intelligent onboard program
- ▶ Android 9.0 open connectivity
- ▶ IP65 protection



Unique One-Man Solution

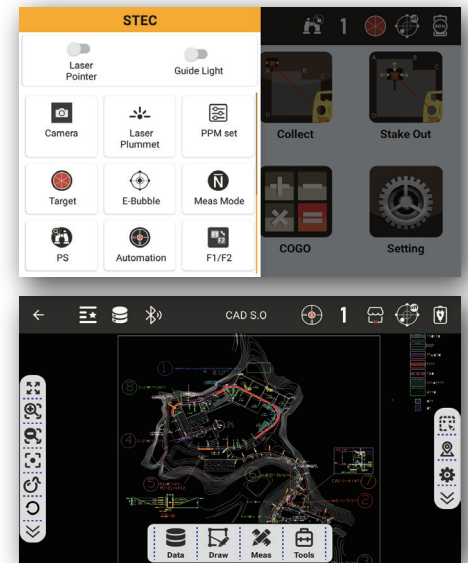
With its exclusive long-range Bluetooth (**600m**), AXIS10 allows a single operator to control the entire surveying process without the need for additional personnel.

More Intuitive Functionality

Capture the target more easily with icons that display the measurement status in real-time, or with graphic guidance like an electronic compass.

More Powerful Programs

The programs, like CAD stake out, ensuring that construction projects align perfectly with design plans. With AXIS10, you can achieve higher productivity, better project coordination, and a smoother workflow from start to finish.

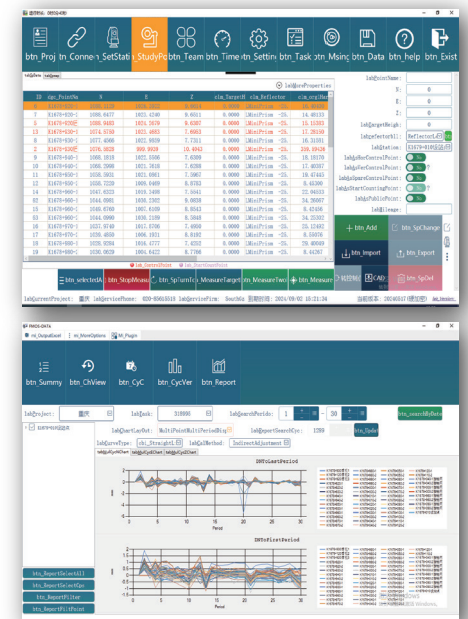


Genius for Monitoring

AXIS10 can be adapted to your own monitoring software after debugging. We also offer a specialized option designed for real-time data collection, processing, and management in monitoring applications.

STEC-MOS

STEC-MOS is a professional automated monitoring software. The system features automatic learning, automatic measurement, automatic data processing, and remote maintenance, enabling real-time data analysis and processing to provide timely warnings.



SDK Free for Develop

Unlock the full potential of your projects with AXIS10 robotic total station, now equipped with an open SDK development package.

Seamlessly integrate and collaborate across a range of application, from pipe jacking guidance and tunnel boring machines to smart construction and paving systems. AXIS10 brings precision, flexibility, and efficiency to every phase of your operation, making it the ultimate tool for advanced construction and engineering solutions.



SPECIFICATIONS

ANGLE

Accuracy	0.5"/1"
Method	Absolute Encoding
Detecting System	H: quadruple; V: quadruple
Minimum Reading	0.1"
Diameter of Circle	79mm
Vertical Angle	Zenith 0/ Horizontal 0
Unit	360°/400gon/6400mil

LEVEL

Plate Level	30"/2mm
Circular Level	8"/2mm

LASER PLUMMET

Type	635nm, Class II
Accuracy	0.4mm at 1.5m height
Spot	1.8mm at 1.5m height

DISTANCE

Single Prism Range	3,500m
Accuracy	1mm+1ppm
Non-prism Range	1,000m
Accuracy	3mm+2ppm
Measuring Time - Prism	Fine: <0.7s; Tracking: <0.3s
- Non-P	T<600m: 0.5-3s; T>600m: <10s
PPM Correction	Auto Sensor

GENERAL

Display	Two sides, 6-inch color touch LCD
Camera	5 MP
Guide Light	Red/Yellow, 635nm/593nm
OS	Android 9.0
Internal Memory	RAM 3GB, ROM 32GB
CPU	MSM8953
I/O Interfaces	RS232, USB, Micro USB, Bluetooth 4.0
WLAN	Dual-band 802.11/a/b/g/n
Battery	Li-Ion, 14.4V, 6400mAh
Working Duration	8 Hours
Waterproof/Dustproof	IP65
Operating Temperature	-20°C to +50°C
Dimension	430 (H)*255 (L)*235 (W) mm
Weight	9.3KG

TELESCOPIC

Length	164.5mm
Diameter	45mm (EDM: 47mm)
Magnification	30x
Image	Erect
Field of View	1°30'
Resolving Power	3"
Minimum Focus	1.5m

xTrak MOTORIZATION

Type	Torque motor
Maximum Speed	180°/s
Auto Prism Recognize	
Working Range	1.5-1000m
Searching Time	5s
Prism Search	
Working Range	1.5-300m
Typical Searching Time	<10s
Field of View	V: ±20°, H: 360°
Prism Lock	
Tracking Speed	20°/s

TABLET - S TAB

Display	8-inch multi-touch color screen
Camera	Rear: 13 MP / Front: 5 MP
OS	Android 10
Internal Memory	RAM 4GB, ROM 64GB
CPU	SDM632
I/O Interface	Type C, Bluetooth 4.2, WLAN
Battery	3.8V, 8000mAh, Li-ion
Working Duration	10 Hours
Waterproof/Dustproof	IP67
Operating Temperature	20°C to +60°C
Dimension	235*146*13 mm

COMPENSATOR

Tilt Sensor	Dual-axis Liquid electric sensor
Range	4'
Accuracy	1"